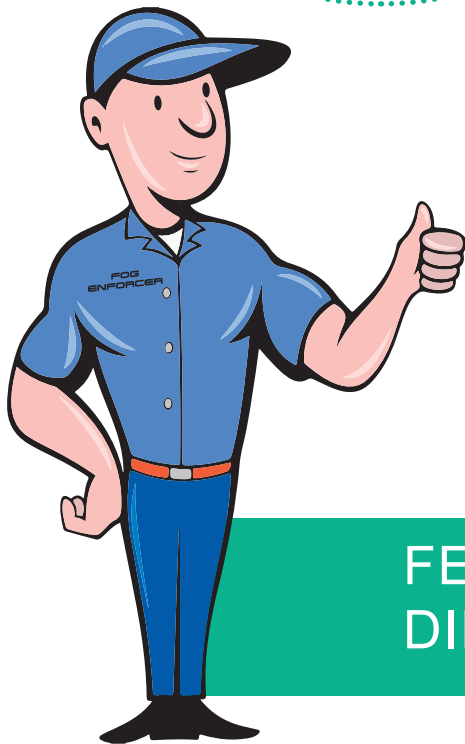
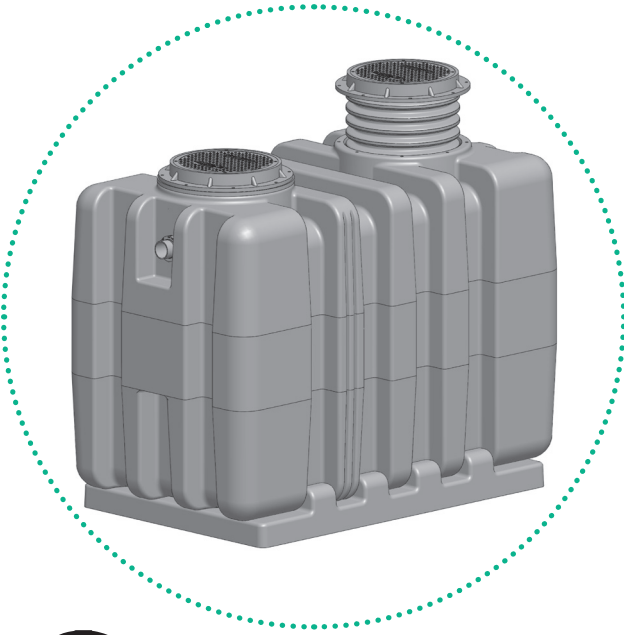


FOG ENFORCER SOLID ENFORCER FOG ENFORCER XL

Super Capacity HDPE Interceptors



FEATURING "GO WITH THE FLOW"
DIFFUSER TECHNOLOGY



Proudly made
in the U.S.A.

FOG ENFORCER

FOG ENFORCER XL

Series HDPE Interceptors

The FOG Enforcer is an ultra-high capacity HDPE grease interceptor with industry leading storage capacity. Specially designed to reduce installation cost and project delays, FOG Enforcer utilizes the latest design and technology to capture and store Fats, Oils and Grease. FOG Enforcer is the key component in a commercial kitchen FOG interception system.

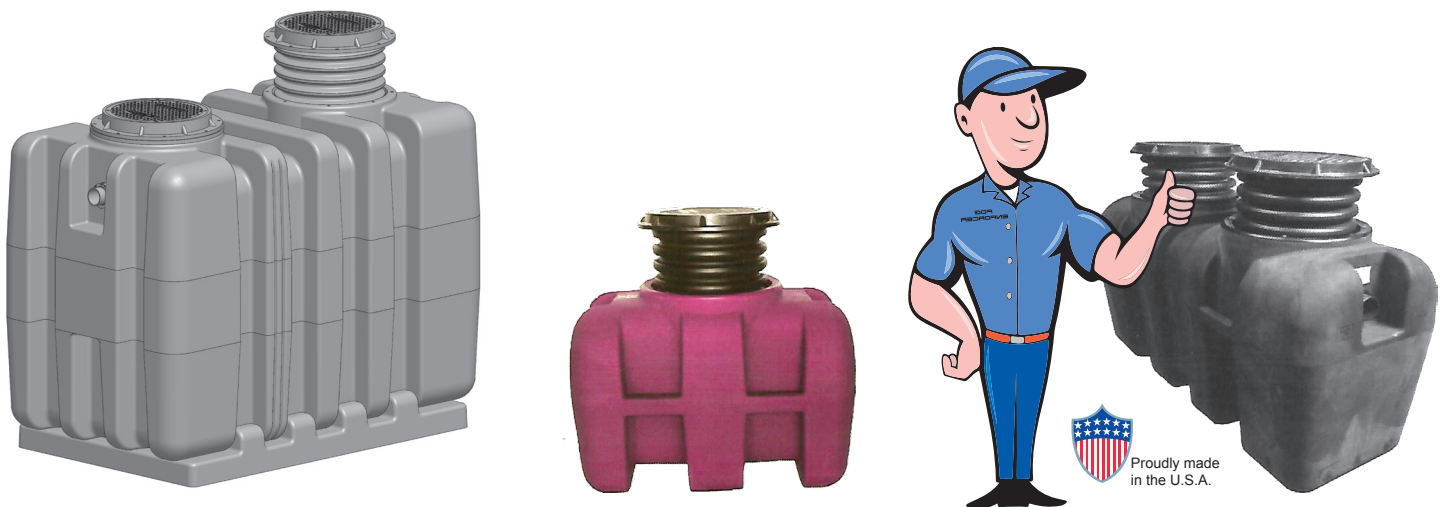
The proper installation of a FOG Enforcer commercial grease interceptor reduces and completely manages the problems associated with exiting non-emulsified grease and oils contained in commercial kitchen discharge.

THE FOG MONSTER IS LURKING IN YOUR COLLECTIONS SYSTEM

FOG ENFORCER - A better solution

By carefully combining design efficiency with best in class FOG diffusion technology, FOG Enforcer offers advantages and PDI certification, not available with other systems.

The key benefit of a FOG Enforcer system is an unprecedented amount of onsite Fats, Oils and Grease storage. We use a highly efficient separation system, which will exceed today's increasingly tough municipal standards.



FOG Enforcer has a complete line of FOG Interceptors.

In fact FOG Enforcer has more sizes available than most Industry Leading Brands.

FOG ENFORCER

FOG ENFORCER XL SERIES

Offers Measurable Advantages

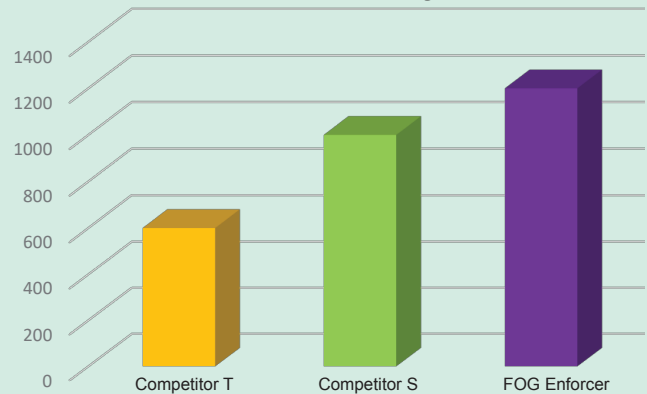
FOG Enforcer offers industry leading FOG storage capacity. Each FOG Enforcer offers you an extremely high storage capacity when compared to other interceptors in the marketplace. This reduces the chance of a system failure due to any delay in scheduled maintenance. A working sanitation system prevents unwanted indoor odors and protects from overflows and back-ups.

It is important that the FOG Interception Systems be sized correctly, professionally installed and regularly maintained in accordance with state and local codes. Designed storage capacity affects scheduled maintenance. A large storage capacity often reduces maintenance and pumping costs.

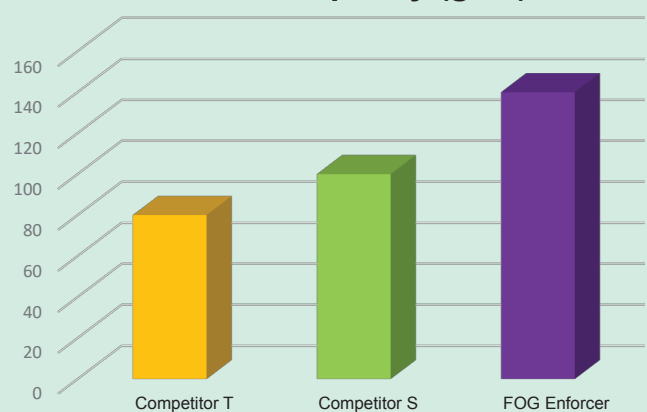


**FOG Enforcer DESTROYS
THE FOG MONSTER!!**

Grease Capacity (lbs.)



Solids Capacity (gals)



FOG ENFORCER

FOG ENFORCER XL SERIES

“Go with the Flow” Diffuser Technology

FOG Enforcer’s “Go with the flow” diffusing system allows for maximum use of the entire holding basin. This maximized use of the basin allows for approximately 20% more storage capacity than other lesser interceptors. Additionally, when combining the FOG Enforcer’s “Go with the Flow” diffuser with the included FOG Enforcer’s external flow control, optimum conditions are set for a more efficient and complete separation of Fats, Oils and Grease from water.

Studies show traditional style Interceptors with no diffuser will only channel FOG to the center of the interceptor. These traditional style interceptors start losing efficiency once the unit reaches 25% storage capacity, increasing the likelihood of an unacceptable level of FOG being released downstream and a significant loss of grease storage capacity.

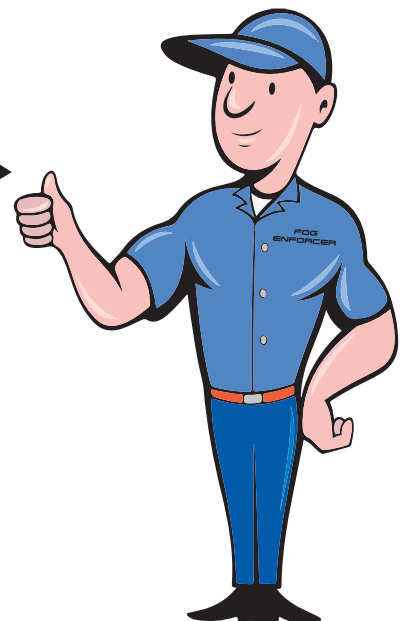
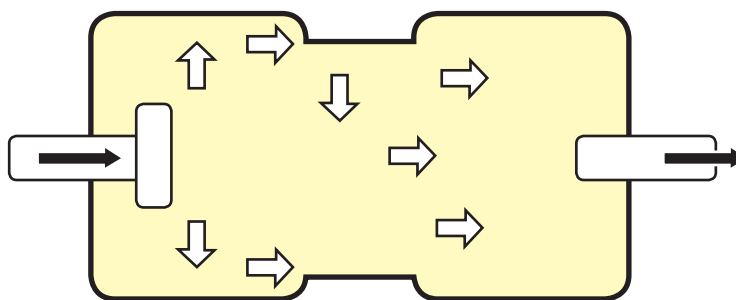


Traditional FOG Internal Distribution Pattern



Unavailable Storage

FOG Enforcer’s “Go with the Flow” Diffuser Technology circulates the incoming flow allowing for better dispersion through the interceptor system. The result is a greater use of the separator body yielding more efficient separation of grease from water and more designed storage capacity.



Proudly made
in the U.S.A.

WE NEVER CLOSE BECAUSE THE FOG MONSTER NEVER SLEEPS



FOG Enforcer is built tough, made of HDPE, boasting a limited lifetime warranty. FOG Enforcer will continue to work and efficiently service any application for the expected life of the building. FOG Enforcer works as hard as you do.

FOG Enforcer is on the job
24 / 7 / 365

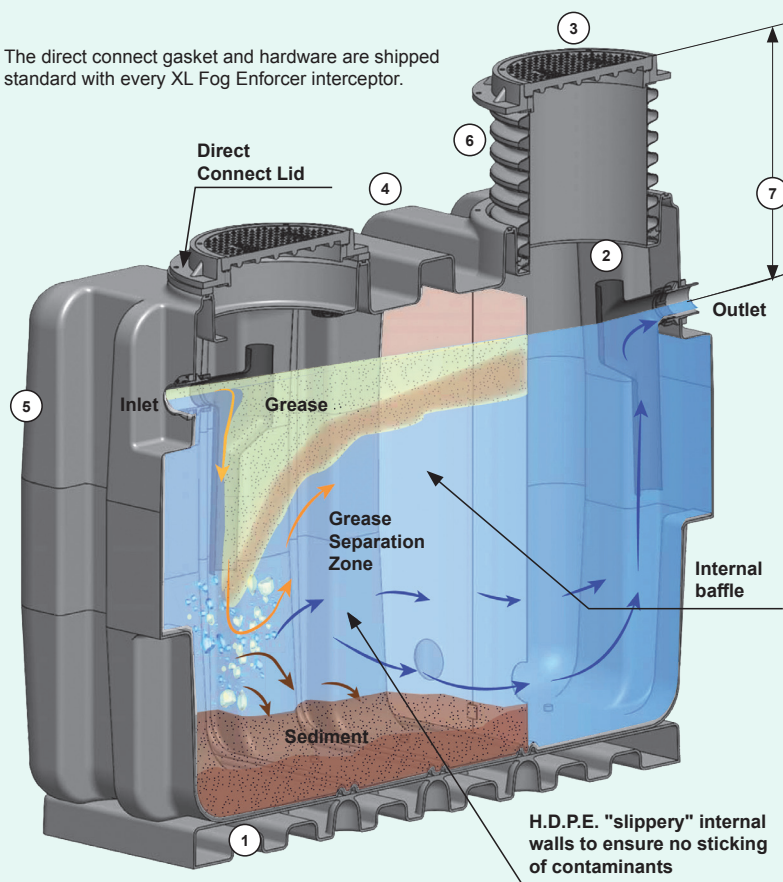
- FOG Enforcer can be installed indoors or outdoors.
- FOG Enforcer can be easily run in parallel or series as needed to support the building design requirements.
- FOG Enforcer easily fits through a 36" doorway and can be maneuvered by two people.
- FOG Enforcer saves on installation costs, as it does not require a vessel vent.
- FOG Enforcer ships complete with H-20 load rated covers as standard equipment.
- Includes the FOG Enforcer external flow control.
- FOG Enforcer does not require a separate support stand or extensions to grade.
- FOG Enforcer is constructed of HDPE.
- ALL THESE STANDARD FEATURES PROVIDE MEASUREABLE SAVINGS.



FOG ENFORCER XL

Series HDPE Interceptors

The direct connect gasket and hardware are shipped standard with every XL Fog Enforcer interceptor.



LIFETIME WARRANTY - NO RUSTING!



Corroded Concrete Interceptor
Typical life expectancy is 10 years.



Rusted Steel Grease Interceptor
Typical life expectancy is 5 years.

SIZES AVAILABLE:

500, 750, 1000, 1300, 1500 (Liquid Holding Capacity in Gallons)

GREASE INTERCEPTORS

H.D.P.E. vs Concrete, Steel & Fiberglass & Fog Enforcer XL Features & Advantages

FEATURES AND BENEFITS

1. BASE FOR BODY

Standard, 6' base secured to the underside of the interceptor.

2. SAMPLE PORT ACCESS

Sample port access is provided standard. Samples of discharge water taken from top opening of outlet piping.

3. H-20 LOAD RATED LID

20,000 Lb. ASSSHTO H-20 load rated steel encased composite lids and collar are standard to withstand heavy loads.

4. STRUCTURAL INTEGRITY

Ribbed body design provides extra structural integrity for in ground installations. Body is rotationally molded High Density Polypropylene with a 3/8" uniform wall thickness providing a strong but lightweight body. This allows installation without need of a backhoe or crane.

5. H.D.P.E. MATERIAL

High Density Polypropylene (H.D.P.E.), 38" rotationally molded material is used in every Fog Enforcer XL Grease and Oil Interceptor. H.D.P.E. is less brittle than fiberglass and less likely to crack during installation. H.D.P.E. interceptors have NO environmental impact. Both fiberglass and concrete interceptors have a negative impact on our environment.

6. EXTENSIONS KEY FEATURE

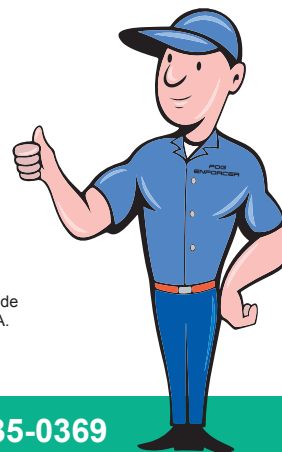
With Fog Enforcer XL patented extension system, every lid ships with a 24' X 24" piece of ADS corrugated pipe which provides the installer with up to a 37.25" "C" dimension. If a greater "G" dimension is required, the contractor has the option to purchase it from Fog Enforcer XL or to buy a length of ADS pipe from their local waterworks wholesaler in order to complete the installation immediately. Flexible extensions make for easier installation where grade may not be level.

7. EXTRA ROUGH-IN DIMENSION

Standard "C" dimension is 37.25" which can be field adjusted down to 20.25" resulting in contractors not having to buy extensions as often.



Proudly made in the U.S.A.

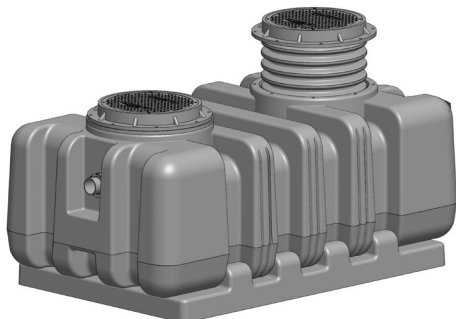


FOG ENFORCER XL

Super Capacity HDPE Interceptors

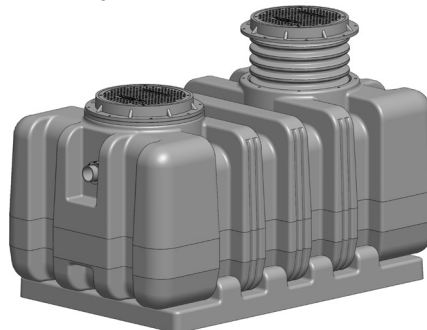
Extra Large Grease and Oil Interceptors - 500, 750, 1000, 1300 and 1500 U.S. gallon liquid holding capacity. (Models can be combined to achieve 2000, 2600 and 3000 U.S. gallon liquid holding capacities.) Interceptor images below illustrate the standard lid design with the 24" diameter corrugated pipe between lid and body and also the direct connect lid (Option -DCL).

FE-XL-500 - Grease Interceptor
OE-XL-500 - Oil Interceptor



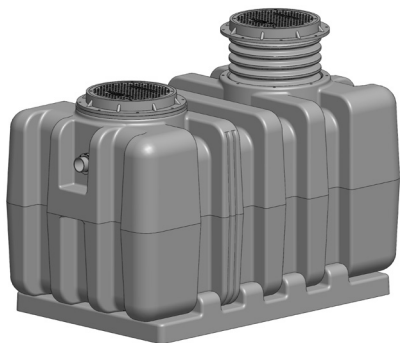
500 Gallons Liquid Holding Capacity

FE-XL-750 - Grease Interceptor
OE-XL-750 - Oil Interceptor



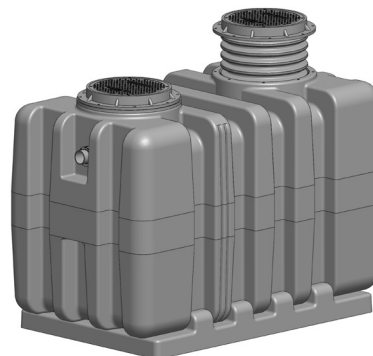
750 Gallons Liquid Holding Capacity

FE-XL-1000 - Grease Interceptor
OE-XL-1000 - Oil Interceptor



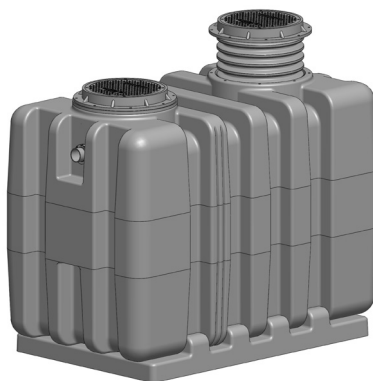
1,000 Gallons Liquid Holding Capacity

FE-XL-1300 - Grease Interceptor
OE-XL-1300 - Oil Interceptor



1,300 Gallons Liquid Holding Capacity

FE-XL-1500 - Grease Interceptor
OE-XL-1500 - Oil Interceptor



1,500 Gallons Liquid Holding Capacity

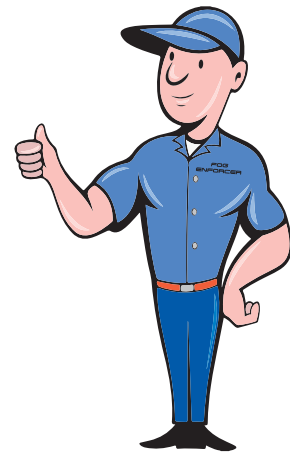
The Fog Monster
“is always lurking in your fog collection system”



Proudly made
in the U.S.A.



LIMITED LIFETIME WARRANTY



FOG Enforcer represents and warrants that our HDPE range of grease and oil interceptors (products) will be free from any defects in material and workmanship, including corrosion, during the the plumbing system in which the products were originally installed and will, at its option, agree to replace, repair, to provide credit to the purchaser.

This warranty does not cover damage caused by the products' normal usage, or wear and tear; nor does it cover damage from naturally occurring events, including but not limited to: UV, freeze related damage or natural disasters. The cost of regular maintenance (including the repair of parts) is not covered by this warranty. This warranty does not cover fabricated steel products or any monitoring equipment that may be used with FOG Enforcer interceptors. This warranty is only effective if the Products were:



Proudly made
in the U.S.A.

- Installed per FOG Enforcer's installations and operated per FOG Enforcer's operation and maintenance instructions;
- Installed in accordance with applicable plumbing and building codes and passed applicable testing methods immediately after installation.
- Not subjected to abuse or misuse, whether negligent or intentional;
- Not modified, altered or repaired by anyone not authorized by FOG Enforcer.
- Sold through FOG Enforcer qualified Representative.

This warranty is the purchaser's sole and exclusive remedy, and acceptance of this exclusive remedy is a condition of the contact for the purchase of these products.

Under no circumstances shall FOG Enforcer be responsible for any incidental, special, consequential or punitive damages, or for any cost, attorney fees, expenses, losses or delays claimed to be a consequence of any damage to failure of, or defect in any of these products including, but not limited to, any claims for loss of profits, transportations, removal, and installation charges, This warranty is exclusive and in lieu of all other warranties or conditions, written or oral, expressed or implied.

For more Information Please Contact Us:

