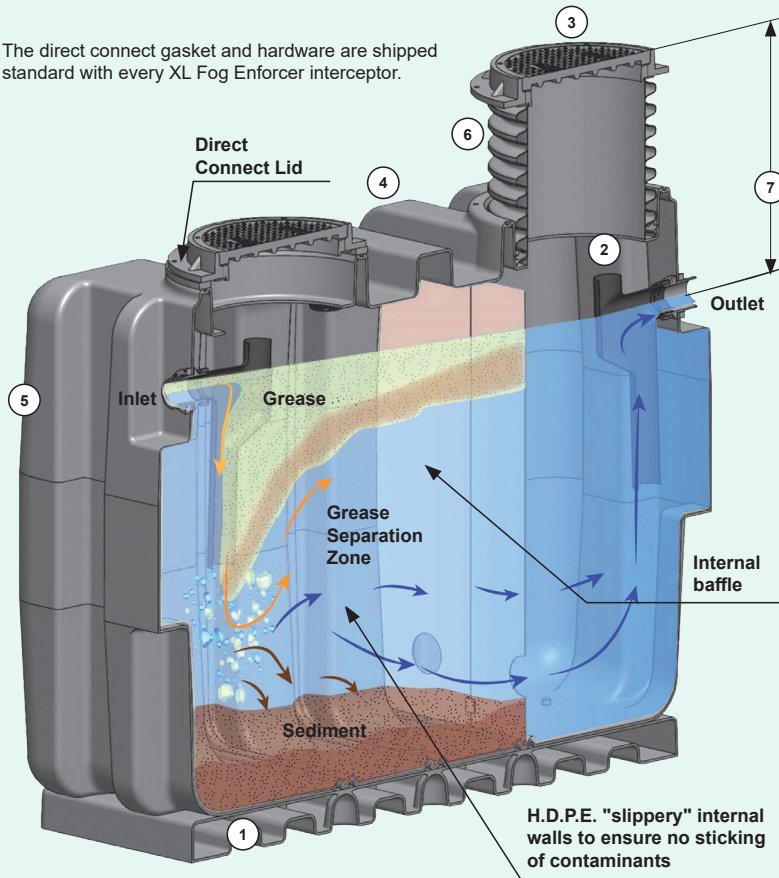


FOG ENFORCER XL

Series HDPE Interceptors

The direct connect gasket and hardware are shipped standard with every XL Fog Enforcer interceptor.



H.D.P.E. "slippery" internal walls to ensure no sticking of contaminants

LIFETIME WARRANTY - NO RUSTING!



Corroded Concrete Interceptor
Typical life expectancy is 10 years.



Rusted Steel Grease Interceptor
Typical life expectancy is 5 years.

SIZES AVAILABLE:

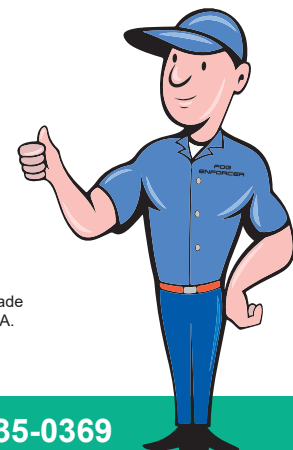
500, 750, 1000, 1300, 1500 (Liquid Holding Capacity in Gallons)

GREASE INTERCEPTORS

H.D.P.E. vs Concrete, Steel & Fiberglass & Fog Enforcer XL Features & Advantages

FEATURES AND BENEFITS

- 1. BASE FOR BODY**
 Standard, 6' base secured to the underside of the interceptor.
- 2. SAMPLE PORT ACCESS**
 Sample port access is provided standard. Samples of discharge water taken from top opening of outlet piping.
- 3. H-20 LOAD RATED LID**
 20,000 Lb. ASSSHTO H-20 load rated steel encased composit lids and collar are standard to withstand heavy loads.
- 4. STRUCTURAL INTEGRITY**
 Ribbed body design provides extra structural integrity for in ground installations. Body is rotationally molded High Density Polypropylene with a 3/8" uniform wall thickness providing a strong but lightweight body. This allows installation without need of a backhoe car crane.
- 5. H.D.P.E. MATERIAL**
 High Density Polypropylene (H.D.P.E.), 38" rotationally . Molded material is used in every Fog Enforcer XL Grease and Oil Interceptor. H.D.P.E. is less brittle than fiberglass and less likely to crack during installation. H.D.P.E. interceptors have NO environmental impact. Both fiberglass and concrete interceptors have a negative impact on our environment.
- 6. EXTENSIONS KEY FEATURE**
 With Fog Enforcer XL patented extension system, every lid ships with a 24' X 24" piece of ADS corrugated pipe which provides the installer with up to a 37.25" "C" dimension. If a greater "G" dimension is required, the contractor has the option to purchase it from Fog Enforcer XL or to buy a length of ADS pipe from their local waterworks wholesaler in order to complete the installation immediately. Flexible extensions make for easier installation where grade may not be level.
- 7. EXTRA ROUGH-IN DIMENSION**
 Standard "C" dimension is 37.25" which can be field adjusted down to 20.25" resulting in contractors not having to buy extensions as often.



Proudly made in the U.S.A.

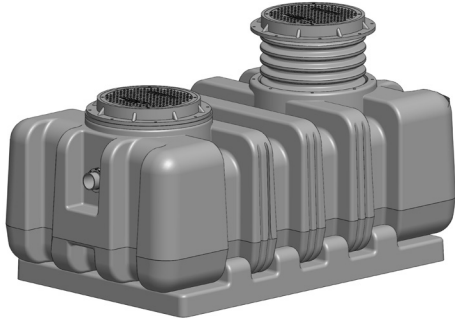


FOG ENFORCER XL

Super Capacity HDPE Interceptors

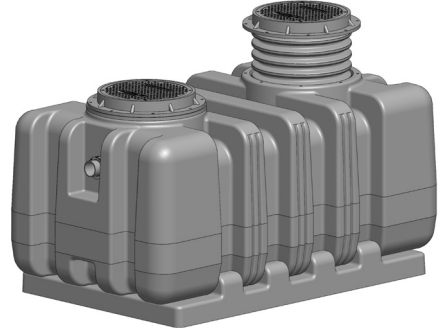
Extra Large Grease and Oil Interceptors - 500, 750, 1000, 1300 and 1500 U.S. gallon liquid holding capacity. (Models can be combined to achieve 2000, 2600 and 3000 U.S. gallon liquid holding capacities.) Interceptor images below illustrate the standard lid design with the 24" diameter corrugated pipe between lid and body and also the direct connect lid (Option -DCL).

FE-XL-500 - Grease Interceptor
OE-XL-500 - Oil Interceptor



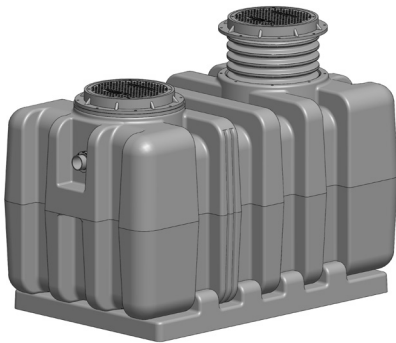
500 Gallons Liquid Holding Capacity

FE-XL-750 - Grease Interceptor
OE-XL-750 - Oil Interceptor



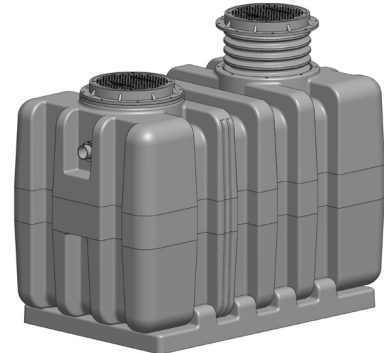
750 Gallons Liquid Holding Capacity

FE-XL-1000 - Grease Interceptor
OE-XL-1000 - Oil Interceptor



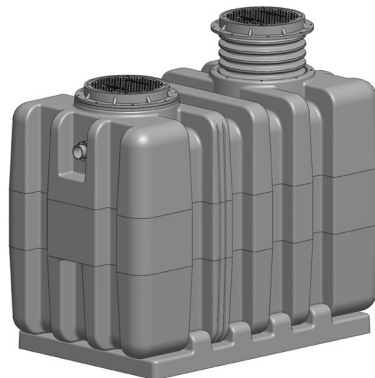
1,000 Gallons Liquid Holding Capacity

FE-XL-1300 - Grease Interceptor
OE-XL-1300 - Oil Interceptor



1,300 Gallons Liquid Holding Capacity

FE-XL-1500 - Grease Interceptor
OE-XL-1500 - Oil Interceptor



1,500 Gallons Liquid Holding Capacity

*The Fog Monster
"is always lurking in your fog collection system"*



Proudly made
in the U.S.A.

